

COUNTRYM^{IN}

corporate apparel



06 POLOS

14 SHIRTING

30 SEPARATES

38 KNITWEAR

42 JACKETS

48 PREMIUM RANGE

CONTENTS



POLOS





SHADOW POLO

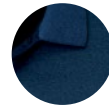
Cotton Rich 54% Cotton, 23% Viscose, 23% Polyester, 175 GSM, UPF rating - Excellent
Soft-feel, cross-dyed tonal fine stripe pattern
Sleek knitted flat jacquard collar, Loose pocket included

MENS SHADOW POLO

Code: P501MS // Size: S - 5XL

LADIES SHADOW POLO

Code: P501LS // Size: 8 - 24



CARBON
BLUE



GRAPHITE
BLACK



RAZOR POLO

100% BIZ COOL™ Polyester Sports Interlock, 155 GSM, UPF rating - Excellent, Grid mesh underarm panels for breathability, Unique sleeve print feature, Contrast panels and piping, Knitted collar with contrast placket, Loose pocket included

MENS RAZOR POLO

Code: P405MS // Size: S - 5XL

LADIES RAZOR POLO

Code: P405LS // Size: 8 - 24





SONAR POLO

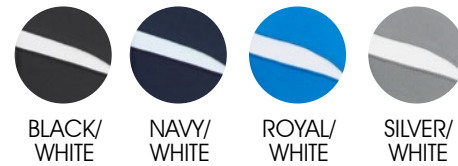
80% BIZ COOL™ Polyester, 20% Cotton back fabric, 185 GSM, UPF rating - Excellent
Breathable pique knit with cotton on the inside, Spliced shoulder and back contrast panels, Modern self fabric collar and button placket, Mens style includes loose pocket

MENS SONAR POLO

Code: P901MS // Size: XS - 5XL

LADIES SONAR POLO

Code: P901LS // Size: 6 - 24



UNITED POLO

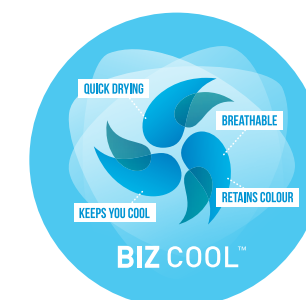
100% BIZ COOL™ Polyester Sports Interlock, 155 GSM, UPF rating - Excellent, New stretch sports interlock fabric, Contrast shoulder panels and piping, Matching knitted collar
Back and underarm mesh panel inserts
Loose pocket included

MENS UNITED S/S POLO

Code: P244MS // Size: S - 5XL

LADIES UNITED S/S POLO

Code: P244LS // Size: 8 - 24





AERO POLO

100% BIZ COOL™ Cotton-feel Micro Polyester, 160 GSM, UPF rating - Good, No-fuss anti-shrink, anti-fade fabric has a cotton-like feel that keeps you cool and dry, Heathered marle pattern adds a subtle point of difference, Flat-locked shoulder seams for mobile comfort, Neatly designed self-fabric collar & placket, Mens style includes loose pocket

MENS AERO POLO

Code: P815MS // Size: S - 5XL

LADIES AERO POLO

Code: P815LS // Size: 6 - 24



BLADE POLO

BIZ COOL™ 60% Cotton, 40% Polyester Soft-touch Jersey, 175 GSM, UPF rating - Very Good, Raglan sleeve with contrast trim, Contrast stitching and piping detail Knitted collar with contrast tipping Includes loose pocket

MENS BLADE POLO

Code: P303MS // Size: S - 5XL

LADIES BLADE POLO

Code: P303LS // Size: 6 - 24



SHIRTING





MADISON BLOUSES

100% Polyester Mechanical Stretch fabric
Wrinkle resistant, fuss free fabric with
flattering drape. Finely stitched Boatneck
detail Sleeves have a versatile roll-up tab
function, Longer length with shirt-tail hem
designed to be worn out or tucked in
Gently shaped through the torso for a
streamlined silhouette

LADIES MADISON BOATNECK BLOUSE
Code: S828LL // Size: 6 - 26

100% Mechanical Stretch Polyester
Easy elegance. Our Madison sleeveless
blouse has a clean, shawl collar neckline
and concealed buttons, creating a beautiful
understated silhouette. Perfect for warmer
climates or for layering under a jacket.

LADIES MADISON SLEEVELESS BLOUSE
Code: S627LN // Size: 6 - 20



100% Mechanical Stretch Polyester.
No other piece is as versatile as the
Madison blouse. Wear it sleeves down and
tucked in for a streamlined office look, or
roll-up the sleeves and wear loosely out
for a contemporary cool style. Fuss-free
fabric with a mechanical stretch so you'll
be comfortable all day long.

LADIES MADISON L/S BLOUSE
Code: S626LL // Size: 6 - 26

100% Mechanical Stretch Polyester,
Designed to work. The Madison short
sleeve blouse is big on features and low
on maintenance. Incorporating a secret
button to prevent gaping, a built in action
back pleat and functional, easy care
fabric. It's the perfect choice for practical,
everyday comfort.

LADIES MADISON S/S BLOUSE
Code:S628LS // Size: 6 - 26





AVA TOP

95% Polyester, 5% Elastane Jersey Knit, A sophisticated classic, the Ava top will refresh any wardrobe. The luxurious jersey knit and softly draped neckline creates an elegant, effortlessly styled professional appearance.

LADIES AVA DRAPE KNIT TOP
Code: K625LS // Size: 6 - 26



MIA TOP

95% Polyester, 5% Elastane Jersey Knit, Femininity at its most modern. Our Mia top has a beautiful pleat fold detail, slightly offset to allow space for a company logo. Made from a soft jersey knit that flatters without clinging.

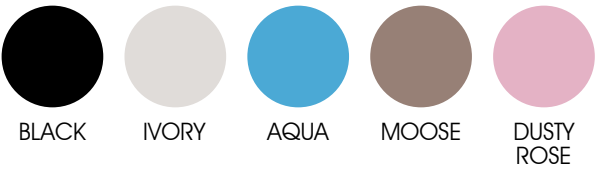
LADIES MIA PLEAT KNIT TOP
Code: K624LS // Size: 6 - 26



BLAISE TOP

95% Polyester 5% Elastane. Jersey knit structure provides stretch and comfort, combined with durable and easy-care properties, making this fabric a wardrobe essential. Machine washable with little to no pressing required.

WOMENS BLAISE TOP
Code: 44412 // Size: 4 - 26





MENS JAGGER L/S SHIRT
Code: S910ML // Size: XS - 5XL

LADIES JAGGER ¾/S SHIRT
Code: S910LT // Size: 6 - 24

MENS JAGGER S/S SHIRT
Code: S910MS // Size: XS - 5XL

LADIES JAGGER S/S SHIRT
Code: S910LS // Size: 6 - 24



SILVER



FRENCH
BLUE



JAGGER SHIRTS

Easy Care 60% Cotton, 40% Polyester
Yarn dyed, cotton-rich, micro houndstooth fabric. Advanced performance fabric finish for better wrinkle resistance, Mens features modern collar, chest pocket, twin back pleats and adjustable cuff, Ladies features bust darts, waist shaping and neatly finished placket, Can be worn tucked in or out





MENS EURO L/S SHIRT
Code: S812ML // Size: XS - 5XL

LADIES EURO L/S SHIRT
Code: S812LL // Size: 6 - 24

LADIES EURO 3/4 SLEEVE SHIRT
Code: S812LT // Size: Size: 6 - 24

MENS EURO S/S SHIRT
Code: S812MS // Size: XS - 5XL

LADIES EURO S/S SHIRT
Code: S812LS // Size: 6 - 24



EURO SHIRTS

Easy Care 65% Polyester, 35% Cotton
Yarn dyed fine stripe fabric, UPF rating
- Very Good. Mens features modern
collar, chest pocket, twin back pleats and
adjustable cuff. Ladies features feminine
gathered detail on shoulder and back
yoke. Curved hem – can be worn in or out.



BLACK



BLUE



WHITE





MENS MONACO L/S SHIRT
Code: S770ML // Size: XS - 5XL

LADIES MONACO L/S SHIRT
Code: S770LL // Size: 6 - 26

LADIES MONACO 3/4 SLEEVE SHIRT
Code: S770LT // Size: 6 - 26

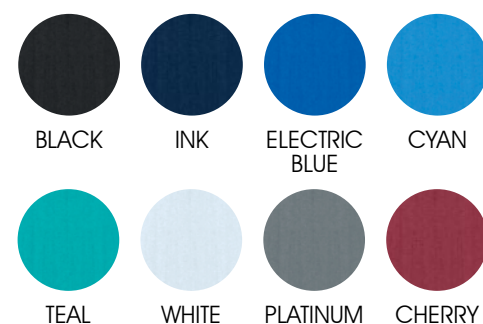
MENS MONACO S/S SHIRT
Code: S770MS // Size: XS - 5XL

LADIES MONACO S/S SHIRT
Code: S770LS // Size: 6 - 26



MONACO SHIRTS

Cotton-Rich 68% Cotton, 28% Polyester, 4% Elastane, Built in stretch for superior comfort, UPF rating - Very Good
Mens features modern collar, chest pocket, and twin back pleats, Curved hem – can be worn in or out, Ladies features French style Y-neckline and turn up cuff design, Waist and bust darts for elegant fit
Longer length with curved hem – can be worn in or out





MENS NEWPORT S/S SHIRT
Code: 42512 // Size: XS - 5XL

MENS NEWPORT L/S SHIRT
Code: 42511 // Size: 4 - 26

WOMENS NEWPORT 3/4 SLEEVE SHIRT
Code: 42522 // Size: XS - 5XL

WOMENS NEWPORT S/S SHIRT
Code: 42520 // Size: 4 - 26



NEWPORT SHIRTS

65% Cotton 33% Polyester 2% Elastane
Yarn dyed Gingham check in a cotton rich
fabric. Perfect for those after a premium
breathable fabric, with the benefits of easy
care and stretch for comfort.



FRENCH
NAVY



PURPLE
REIGN



EDEN
GREEN





MENS HUDSON L/S SHIRT
Code: 40320 // Size: XS - 5XL

MENS HUDSON S/S SHIRT
Code: 40322 // Size: 4 - 26

WOMENS HUDSON 3/4 SLEEVE SHIRT
Code: 40311 // Size: XS - 5XL

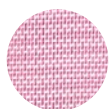
WOMENS HUDSON LONG SLEEVE SHIRT
Code: 40310 // Size: 4 - 26

HUDSON SHIRTS

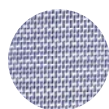
100% Cotton. A wardrobe classic, redefined with a relaxed silhouette and minimal detailing. Constructed from 100% cotton yarn dyed dobby fabric.



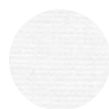
DYNASTY
GREEN



MELON



PATRIOT BLUE



WHITE





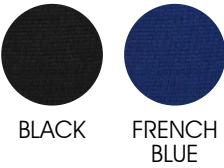
SEPARATES



PARIS DRESS

62% Viscose, 34% Polyester, 4% Elastane
Ponte Roma Knit Machine washable,
crease resistant, easy care fabric. Soft
knitted jersey fabric hugs and holds in all
the right places Pop-over style with side
tie, Faux wrap front designed to flatter a
variety of shapes

LADIES PARIS DRESS
Code: BS911L // Size: XS - XL



AUDREY DRESS

4-way Stretch 62% Polyester, 35%
Viscose, 3% Elastane. Machine washable,
crease resistant, easy care fabric. Fully
lined with stretch lining for superior
comfort. Classic shift dress style with
figure flattering angled seam detail
Reinforced centre back zip and skirt vent
Added 5cm hem allowance for longer
alteration

LADIES AUDREY DRESS
Code: BS730L // Size: 4 - 20



BIANCA JACKET

4-way Stretch 62% Polyester, 35%
Viscose, 3% Elastane. Machine washable,
crease resistant, easy care fabric. Fully
lined with stretch lining for superior
comfort. Modern single button style,
notched tuxedo lapel, tailored pockets
Hidden internal lining zipper for
embroidery access

LADIES BIANCA JACKET
Code: BS732L // Size: 4 - 26



LOREN SKIRT

4-way Stretch 62% Polyester, 35%
Viscose, 3% Elastane. Machine washable,
crease resistant, easy care fabric. Fully
lined with stretch lining for superior
comfort. Modern knee length style with
belt loops. Reinforced centre back zip and
skirt vent. Added 5cm hem allowance for
longer alteration

LADIES LOREN SKIRT
Code: BS734L // Size: 4 - 26





REMY PANT

4-Way Stretch 62% Polyester, 34% Viscose, 4% Elastane. Machine washable, crease resistant, easy care fabric. Created due to popular demand for a slim leg silhouette. Mid-rise, zip front with slimline waistband. No side pockets or belt loops creates a clean sleek appearance at waist and hips. Added 5cm hem allowance for longer alteration. Coordinates with our Perfect Pant Range

LADIES REMY PANT
Code: BS909L // Size: 4 - 26



NAVY BLACK



STELLA PERFECT PANT

4-way Stretch Comfort 62% Polyester, 34% Viscose, 4% Elastane. Stella is the perfect pant for you if; you generally find most pants fit well in the hip and thigh; you want your pant to fit neatly across the rear with some room through the leg; your waist to hip ratio is generally proportionate. Features mid-rise with a flattering wider waistband. Low profile front and back pockets. Classic straight leg shape. Finished inseam length: 82cm

LADIES STELLA PERFECT PANT
Code: BS506L // Size: 8 - 20



NAVY BLACK

EVE PERFECT PANT

4-way Stretch Comfort 62% Polyester, 34% Viscose, 4% Elastane. Eve is the perfect pant for you if; you often find pants gaping at the waist; you need more room through the seat and thigh; you want a flattering cut for your hourglass or pear shape. Features mid-rise with a flattering wider waistband. Low profile front and back pockets. Classic straight leg shape. Finished inseam length: 82cm

LADIES EVE PERFECT PANT
Code: BS508L // Size: 10 - 26



NAVY BLACK



KATE PERFECT PANT

4-way Stretch Comfort 62% Polyester, 34% Viscose, 4% Elastane. Kate is the perfect pant for you if; you find pants fit at the waist but are too loose at the hip; you have a slimmer thigh; you have a petite or slender build. Features mid-rise with a flattering wider waistband. Low profile front and back pockets. Classic straight leg shape. Finished inseam length: 82cm

LADIES STELLA PERFECT PANT
Code: BS507L // Size: 4 - 16



NAVY BLACK



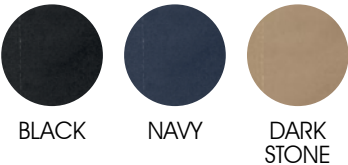


LAWSON CHINO

98% Cotton, 2% Elastane stretch fabric
250 GSM. Garment washed for a soft
lived-in feel. Comfortable modern mid-
rise fit. Flat front with tapered leg styling.
2 Side angled pockets, 2 back welt
pockets.

MENS LAWSON CHINO PANT
Code: BS724M // Size: 72 - 127

LADIES LAWSON CHINO PANT
Code: BS724L // Size: 6 - 26



SLIM PANT

65% Polyester, 35% Viscose - easy care
fabric. Mechanical stretch for added
comfort. Contemporary flat front with 2
side pockets, 1 back welt pocket
Generous seams and 5cm hem allowance
for longer length alteration.Coordinates
with Mens Classic range.

MENS CLASSIC SLIM PANT
Code: BS720M // Size: 72 - 102



FLAT FRONT PANT

65% Polyester, 35% Viscose - Easy Care
Fabric. Mechanical stretch fabric for extra
comfort. Modern style with plain flat front
Ready-to-wear with finished hem. Front
side pockets and 2 back hip pockets.
Wider seams and 5cm (1.9in) hem
allowance for easy alterations

MENS CLASSIC FLAT FRONT PANT
Code: BS29210 // Size: 72 - 127

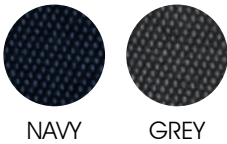


BARLOW PANT

98% Cotton, 2% Elastane stretch fabric
Unique jacquard weave cloth made with
stretch for added comfort, 215 GSM.
Modern mid-rise fit caters to majority of
body types. Flat front with tapered leg
styling. 2 Side angled pockets
5cm hem allowance for longer length
alteration

MENS BARLOW PANT
Code: BS915M // Size: 72 - 127

LADIES BARLOW PANT
Code: BS915L // Size: 6 - 24





KNITWEAR

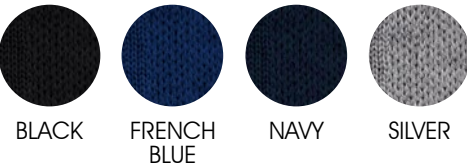


ROMA KNITWEAR

50% Merino Wool, 50% Acrylic - 14 Gauge
Machine washable on wool setting. Mens
classic fit V-neck with relaxed ribbed cuff
and hem that's not too tight or loose. Ladies
modern button-through style, hip length with
softly ribbed cuff and hem

MENS ROMA PULLOVER
Code: WP916M // Size: XS - 5XL

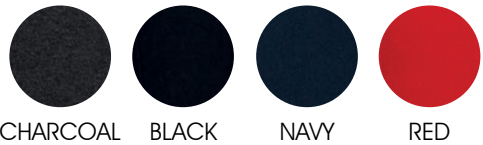
LADIES ROMA CARDIGAN
Code: LC916L // Size: XS - 3XL



2 WAY ZIP CARDIGAN

73% Viscose, 27% Nylon - 12 Gauge. Full
open 2 way zipper. Modern fashion styling

LADIES 2-WAY ZIP CARDIGAN
Code: LC3505 // Size: S - 4XL





JACKETS



APEX VEST

Outer: 100% Polyester, Inner: Bonded textured fleece lining. Lightly water repellent and wind resistant. Stand up collar with soft chin guard. Zippers can be teamed with J744 Zippies to accent your logo. Scalloped longer back tail for added warmth

MENS APEX VEST

Code: J830M // Size: S - 5XL

LADIES APEX VEST

Code: J830L // Size: XS - 2XL



BLACK

GREY

NAVY



APEX JACKET

Outer: 100% Polyester, Inner: Bonded textured fleece lining. Lightly water repellent and wind resistant. Stand up collar with soft chin guard. Zippers can be teamed with J744 Zippies to accent your logo. Scalloped longer back tail for added warmth

MENS APEX SOFTSHELL JACKET

Code: J740M // Size: S - 5XL

LADIES APEX SOFTSHELL JACKET

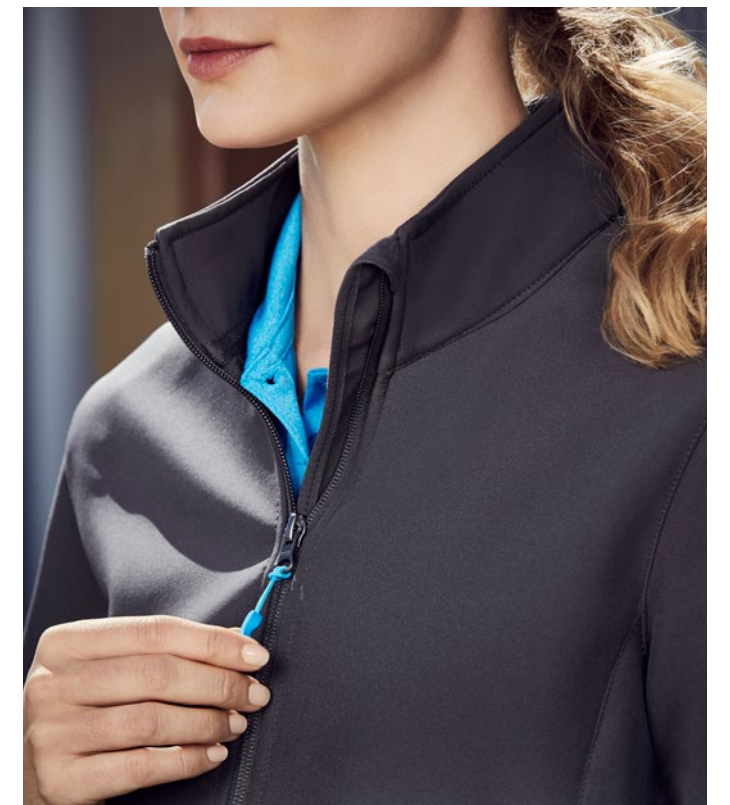
Code: J740L // Size: XS - 2XL



BLACK

GREY

NAVY



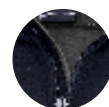


GENEVA JACKET

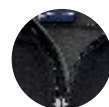
Outer: 100% Breathable Polyester
Inner: Bonded contrast textured micro-ribbed fleece. Stand up collar with soft chin guard. Adjustable cuff with tab closure. Contrast side zippered pockets with toggles. Scalloped longer back tail
Water Repellent rating - 3000mm inner membrane. Breathability rating - 3000g/m². Windproof.

MENS GENEVA JACKET
Code: J307M // Size: S - 5XL

LADIES GENEVA JACKET
Code: J307L // Size: S - 2XL



NAVY
GRAPHITE



BLACK
GRAPHITE



BLACK
RED



BLACK
CYAN

OSLO JACKET

Outer: 65% Polyester, 35% Cotton water repellent jersey fleece. Inner: Bonded 100% Polyester fleece with inner membrane. BIZ TECH™ Breathable, water repellent technical fleece jacket
Bomber style with knitted ribbed hem and cuff. Removable hood, high collar with chin guard. Taped water proof right chest pocket. Waterproof front and pocket zippers. Water Repellent rating - 6000mm
Breathability - 1000g/m². Windproof

MENS OSLO JACKET
Code: J638M // Size: S - 3XL

LADIES OSLO JACKET
Code: J638L // Size: S - 2XL



GREY/
BLACK





BIZCORPORATES

PREMIUM RANGE



BANDLESS PANT

79% Polyester 17% Viscose 4% Elastane.
A lightweight easy care fabric that is soft,
and durable. Contains stretch for comfort
and Viscose for breathability. Suitable for
both functional and corporate roles.

WOMENS BANDLESS SLIMLINE PANT

Code: P815MS // Size: S - 5XL



BLACK

SLATE

MARINE



PENCIL SKIRT

79% Polyester 17% Viscose 4% Elastane.
A lightweight easy care fabric that is soft,
and durable. Contains stretch for comfort
and Viscose for breathability. Suitable for
both functional and corporate roles.

WOMENS BANDLESS PENCIL SKIRT

Code: 20717 // Size: 4 - 20



BLACK

SLATE

MARINE

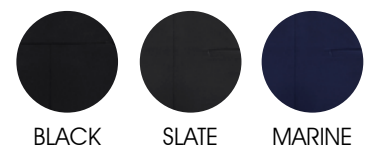


2 BUTTON JACKET

79% Polyester 17% Viscose 4% Elastane.
A lightweight easy care fabric that is soft,
and durable. Contains stretch for comfort
and Viscose for breathability. Suitable for
both functional and corporate roles.

WOMENS TWO BUTTON MID LENGTH JACKET

Code: 60719 // Size: 4 - 26



BLACK

SLATE

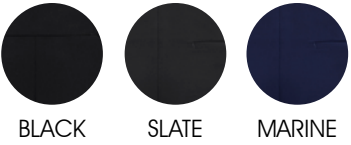
MARINE



2 BUTTON JACKET

79% Polyester 17% Viscose 4% Elastane.
A lightweight easy care fabric that is soft,
and durable. Contains stretch for comfort
and Viscose for breathability. Suitable for
both functional and corporate roles.

MENS CITY FIT TWO BUTTON JACKET
Code: 80717 // Size: 87 - 142



BLACK SLATE MARINE



CAR COATS

50% Wool 50% Polyester - Cavalry Twill.
Jacquard stretch lining. Jacquard stretch
lining. 2 Side panel pockets. Back vent.
Mens features internal metal zip and is
thigh length. Womens features concealed
button front, length finishes above the knee.

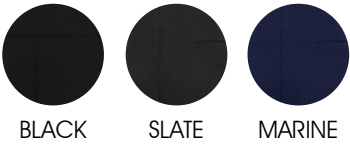
MENS LINED CAR COAT
Code: 83830 // XS - 5XL

WOMENS LINED OVERCOAT
Code: 63830 // XS - 4XL

SLIM FLAT FRONT PANT

79% Polyester 17% Viscose 4% Elastane.
A lightweight easy care fabric that is soft,
and durable. Contains stretch for comfort
and Viscose for breathability. Suitable for
both functional and corporate roles.

MENS SLIM FIT FLAT FRONT PANT
Code: 70716R/ 70716S
Size: 72R - 112R, 107S - 127S



BLACK SLATE MARINE



MIDNIGHT





**COUNTRYMAN HEAD OFFICE
WESTERN AUSTRALIA**

23 Colin Jamieson Drive
Welshpool WA 6106
Phone: (08) 6454 8777
Email: sales@countrymansafety.com.au

**NORTHERN TERRITORY
DARWIN**

80 Winnellie Road
Winnellie NT 0820
Phone: (08) 8947 2524
Email: sales@countrymansafety.com.au

COUNTRYMAN 
corporate apparel

WWW.COUNTRYMANSAFETY.COM.AU